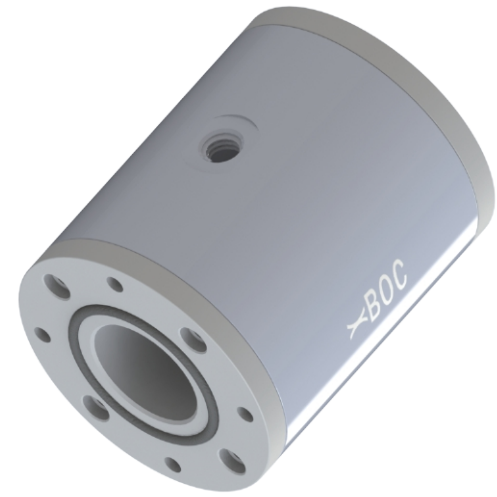


Features	
Design	Pneumatically actuated pinch valve
Sealing principle	Elastic lip seal
Mounting position	Any
Type of mounting	In-line installation
Direction of flow	Reversible
Valve function	2/2 way, normally open
Reset method	Rebound resilience
Nominal pressure	PN10
Sleeve feature	Replaceable



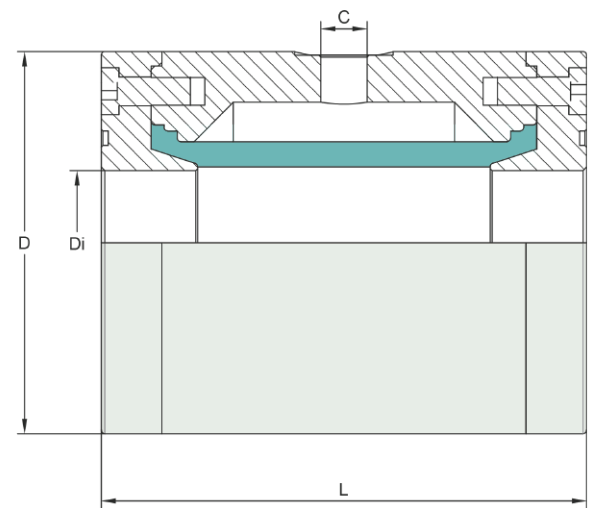
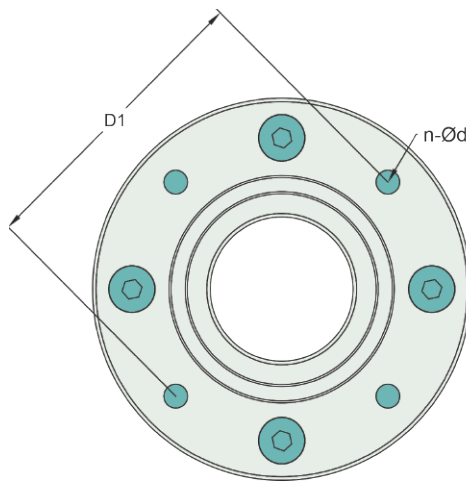
Technical data	
Housing	Aluminum alloy
Socket	White POM
Seal or sleeve	Natural rubber, EPDM, NBR, HNBR, VITON.....
Working temperature [°C]	-20.....+120
Medium pressure [bar]	0.....6
Pressure difference [bar]	1.....3
Optimum control pressure	Medium pressure+Pressure difference

### Advantage

- \* Compact design
- \* Free passage
- \* No plugging
- \* 100% shut off
- \* Quick open-close
- \* Short length
- \* Flange sealing

### Application

- \* Mainly for vacuum toilet system
- \* Medium: water, waste water, sludge, faeces, urine



DN (mm)	Di (mm)	D (mm)	L (mm)	D1 (mm)	C	n-φD	O ring	Vol.l	Weight KG
32	32	82	105	67	G 1/4"	4-φ6.5	48*φ2.5	0.12	0.6
40	40	98	120	82	G 1/4"	4-φ6.5	58*φ3	0.2	0.9
50	50	130	135	102	G 1/4"	4-φ8.5	75*φ5	0.3	1.3