

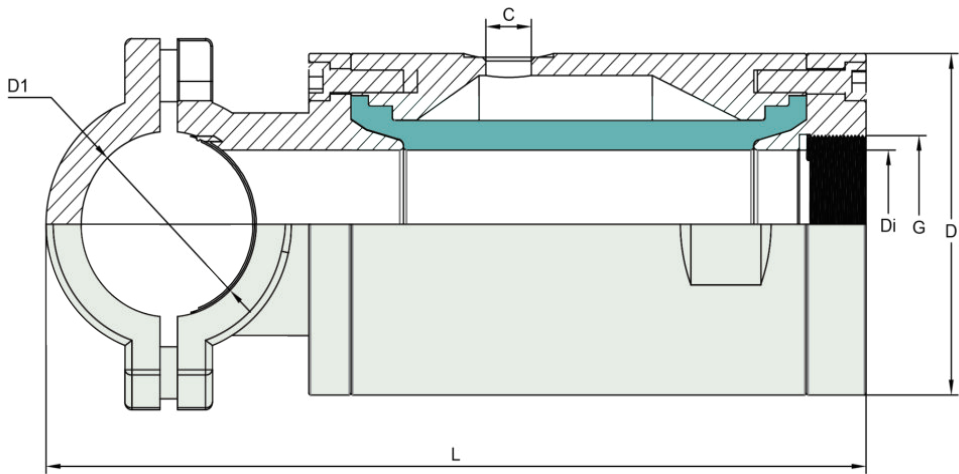
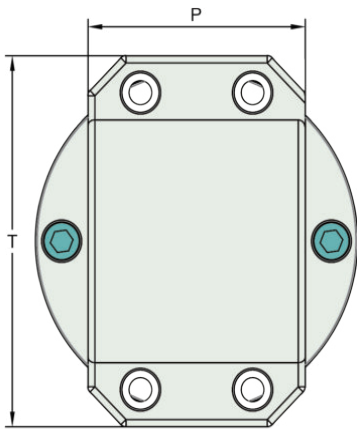
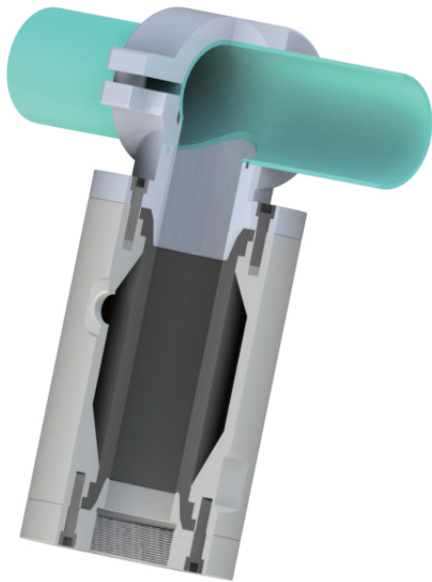
Features	
Design	3 way pneumatically actuated pinch valve
Sealing principle	Elastic lip seal
Design	Pneumatically actuated pinch valve
Mounting position	Vertical Clamp pipe
Flow direction	From pipe hole to each valve
Valve function	2/2 way,normally open
Reset method	Rebound resilience
Nominal pressure	PN10
Sleeve feature	Replaceable



Technical data		
Housing	Aluminum alloy	
Socket	White POM	
Seal or sleeve	Natural rubber,EPDM,NBR,HNBR,VITON.....	
Pipe clamp	PVC	
Working temperature [°C]	-20.....+120	
Medium pressure [bar]	0.....6	
Pressure difference [bar]	1.....3	
Optimum control pressure	Medium pressure+Pressure difference	

Advantage		
* 3 way desgin	* Free passage	* No plugging
* 100% shut off	* Quick open-close	
* Avoid connection loose		

Application	
*Mainly for liquid animal feeding	
*Medium: syrup, ice cream, milk,liquid food	



DN (mm)	Di (mm)	D (mm)	L (mm)	D1 (mm)	C	P	T	Vol.l	Weight KG
40	40	92	234	50	G 1/4"	62	100	0.25	1.8
50	50	116	260	63	G 1/4"	80	116	0.36	2.2